

scan here  
for more info



Holiday Accommodation  
Rates: \$12,600 yearly  
Water: \$370 quarterly  
Body Corp: \$91 weekly

### Local Shops/Cafes

#### Tugun

Cafes, bars, food stores and everything you could need is only a walk or short drive away.

#### Currumbin Beachfront

There's a few cafes, bars and restaurants along with boutique shops along the beachfront.

#### The Pines, Elanora

All your large stores - Kmart, Coles, Woolworths, Aldi and specialty stores too.



Total Unit Size: 84m<sup>2</sup>



# 5/806 Pacific Pde, Currumbin

2 bed | 1 bath | 1 car

### Local Schools

There are a number of Early Childhood Centres in this area.

The primary school in this catchment is Currumbin State Primary School.

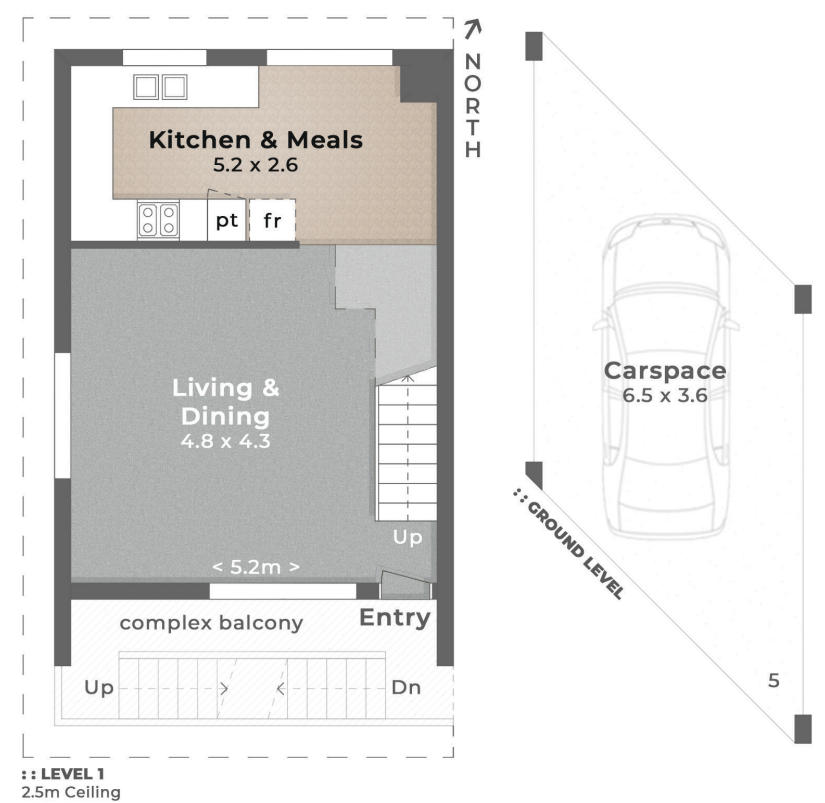
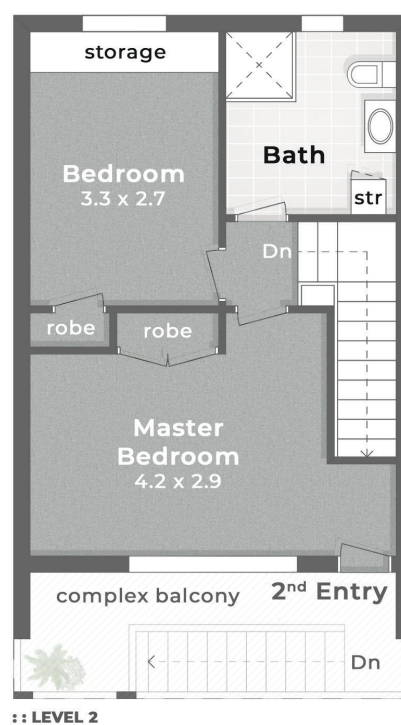
The high school in this catchment is Palm Beach Currumbin State High School.

The closest private school is St Augustines Parish School. It's Prep - Yr 6.

### Farmers Markets

Palm Beach Farmers Market,  
Saturdays 6am-11am

This market is held at PBC High School and is your typical farmers market - lots of produce and food stalls.



PASSOS