

Rates: \$978/6 months
 Water: \$700/6 months
 Body Corp: \$70/week



Total Land Size: 116m2
 Internal Building Size: 80m2

Local Shops/Cafes

James St + surrounding streets,
 This area is a thriving hot spot of cafes,
 bars, restaurants + shops with
 loads of options to try out.

Stocklands, West Burleigh
 All your large stores - Big W, Woolworths,
 Aldi and specialty stores too.



316/15 Burleigh St, Burleigh Heads

2 bed | 1 bath | 1 car

Offers over \$799,000

Local Schools

There are a number of
 Early Childhood Centres in this area.

The primary school in this catchment is
 Burleigh State Primary School.

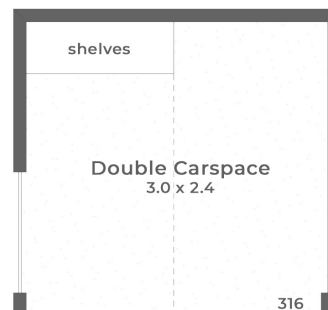
The high school in this catchment is
 Miami State High School.

The closest private school is
 Marymount College. It's Prep - Yr 12.

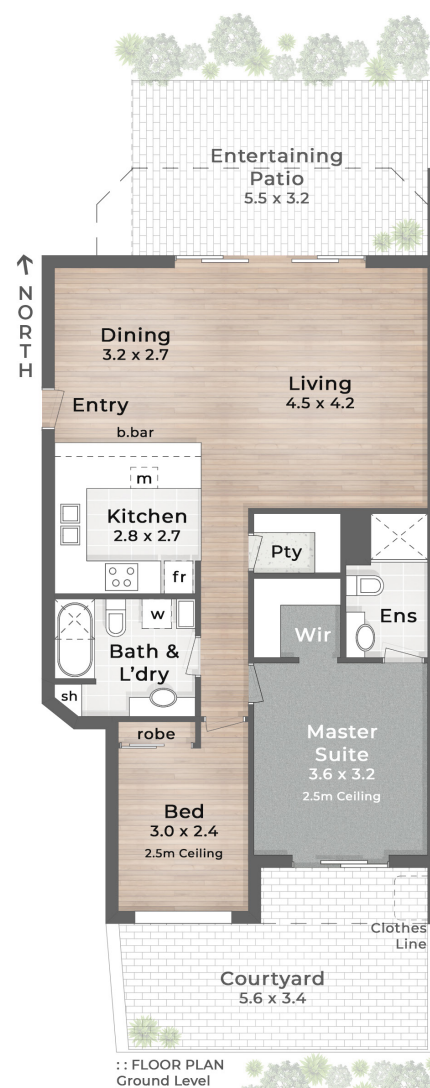
Farmers Markets

Burleigh Farmers Market,
 Saturdays 6am-11am

This market is held at Burleigh State
 Primary School and is your typical
 farmers market - lots of produce
 and food stalls.



:: FLOOR PLAN
 Basement



:: FLOOR PLAN
 Ground Level

POINTS OF INTEREST

1. PARADISE GROVE III
2. James Street Boutiques, Bars & Restaurants
3. Burleigh Headland | 4. Burleigh Heads Beach
5. Burleigh Heads Primary School
6. Burleigh Esplanade | 7. North Burleigh S.L.S.C.
8. Paddock Bakery | 9. Miami One
10. Lower Gold Coast Highway Cafes & Restaurants
11. Precinct Brewing



:: LOCATION MAP

PASSOS